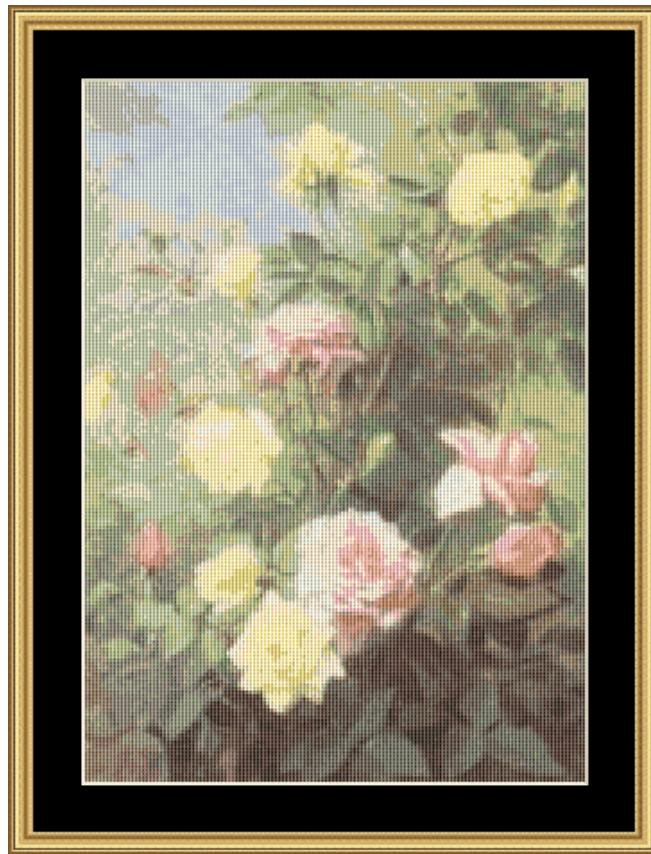


# Mystic Stitch



## ROSE GARDEN SEA-SUM41



### Finished Sizes (approximate)

14 count: 10.75" x 14.25"

18 count: 8.25" x 11.11"

22 count: 6.755" x 9.09"

Stitches: 150 x 200

Congratulations on your purchase of a Mystic Stitch cross stitch pattern! I am confident that you will be pleased with the quality of your project.

Included with your pattern is a clear zip-top plastic bag to protect your pattern and materials, and a coded floss list for the floss that you'll need to complete your project. Our patterns are designed using DMC floss, however, a floss conversion chart showing the color numbers for J&P and Anchor brand floss is available for download on our website [www.mysticstitch.com](http://www.mysticstitch.com)

White or off-white aida fabric is recommended for all of our patterns.

### PATTERN INSTRUCTIONS

The pattern begins in the upper-left corner of the pattern's first page. Your pattern chart is laid out from left to right as follows:

Page 1	Page 2	Page 3
Page 4	Page 5	Page 6
Page 7	Page 8	Page 9

1. Looking at the cover of your pattern, decide which size fabric (14, 18 or 22 count) that you'd like to use.
2. We recommend purchasing a piece of white or off-white aida cloth that is the size of the finished design, plus a couple of inches on each side as a margin.
3. Because of the large number of stitches, we have found the pattern to be more manageable to work with if you stitch one 10x10 stitch grid at a time, and then move on to an adjacent 10x10 block.
4. Stitch each entire page, according to the pattern layout. When you finish page 3, begin page 4 beneath the stitching of page 1.
5. Although each pattern is marked with centering arrows, like most cross stitch designs, we believe you will find it easier to begin stitching your pattern from the top left corner (page one), and following the pattern page by page.

If you have any questions regarding your pattern, or other patterns that we offer, please feel free to contact me at Mystic Stitch ([www.mysticstitch.com](http://www.mysticstitch.com))

Thank you again...and happy stitching!

Kelly Morgante, Designer

## Care and Washing Instructions for your Cross Stitch Projects (Courtesy of DMC®)

### Care Instructions:

- ❖ When handling any needlework, always take the special care that is necessary to keep your work clean. Wash hands frequently to prevent body oils from staining the fabric or cross-stitching.
- ❖ Be sure to remove your cross-stitching from the hoop each time you stop stitching to prevent hoop marks from soiling your fabric.
- ❖ It is recommended that you use approximately 18" lengths of thread when stitching your project. This will help to avoid knotting, twisting or fraying of the thread while you work.
- ❖ Your project should be stored in a bag or workbasket when not being stitched to protect it from dust, spills, etc.

### Washing Instructions:

If you have followed the above care instructions, you may not find it necessary to launder your piece before framing or finishing it. If, however, your piece has become soiled, wash it following the instructions below:

- ❖ Always wash each cross-stitch piece separately - DO NOT wash cross-stitched piece with any other cross-stitch projects or laundry items.
- ❖ Wash cross-stitch in lukewarm water with a mild detergent or dishwashing liquid. DO NOT use Woolite™, harsh detergents or chlorine bleach.
- ❖ Rinse cross-stitch several times in clear water. Do not worry if water becomes colored when washing cross-stitch - continue rinsing piece in clear water.
- ❖ Roll the cross-stitch between two clean towels squeezing gently without wringing - DO NOT allow cross-stitch piece to touch upon itself. Unroll towels and spread out piece flat to dry on a towel. NEVER leave damp cross-stitch folded or in a heap.
- ❖ To iron your piece, place the dry cross-stitch face down between two clean towels and press with a warm, not hot, iron. To remove creases or fold lines from your piece, you may find it necessary to use the steam setting on your iron.
- ❖ It is NOT recommended that Scotchgard™ or other products of this type be used on your cross-stitch projects as they may cause a chemical reaction with the thread dyes.
- ❖ It is generally NOT recommended that your cross-stitch be dry cleaned. However, certain fabrics (i.e., wools) may require dry cleaning. We suggest that you speak to your local dry cleaner, advising him that there may be a reaction between the thread dyes and the dry cleaning chemicals (i.e., benzene, trichlorethylene, etc.)

## Mystic Stitch Pattern Information

**Pattern Name:** Rose Garden Sea-Sum41  
**Designed by:** Kelly Morgante, Mystic Stitch, 2003  
**Stitches:** 150w x 200h  
**Stitch type:** All stitches are full cross stitches, with 2 strands of floss held together

<u>Symbol</u>	<u>Skeins</u>	<u>DMC</u>	<u>Color</u>	<u>Symbol</u>	<u>Skeins</u>	<u>DMC</u>	<u>Color</u>
A	1	3371	Black Brown	u	1	524	Very Light Fern Green
B	1	938	Ultra Dark Coffee	v	1	415	Pearl Gray
C	1	838	Very Dark Beige	w	1	644	Medium Beige Gray
D	1	844	Ultra Dark Beaver	x	1	928	Very Light Gray Green
E	1	898	Very Dark Coffee	y	1	3024	Very Light Brown Gray
F	1	3031	Very Dark Mocha	z	1	224	Very Light Shell Pink
G	1	3021	Very Dark Brown	1	1	778	Very Light Antique Mauve
H	1	801	Dark Coffee Brown	2	1	3033	Very Light Mocha Brown
I	1	839	Dark Beige Brown	3	1	3779	Ultra Very Light Terra Cotta
J	1	433	Medium Brown	4	1	3774	Very Light Desert Sand
K	1	3787	Dark Brown Gray	5	1	3072	Very Light Beaver Gray
L	1	3781	Dark Mocha Brown	6	1	3866	Ultra V L Mocha Brown
M	1	3011	Dark Khaki Green	7	1	739	Ultra Very Light Tan
N	1	3790	Ultra Dark Beige	8	1	822	Light Beige Gray
O	1	611	Drab Brown				
P	1	535	Very Light Ash Gray				
Q	1	645	Very Dark Beaver				
R	1	3363	Medium Pine Green				
S	1	3860	Cocoa				
T	1	640	Very Dark Beige				
U	1	646	Dark Beaver Gray				
V	1	3022	Medium Brown Gray				
W	1	3052	Medium Green Gray				
X	1	522	Fern Green				
Y	1	3862	Dark Mocha Beige				
Z	1	3772	Very Dark Desert				
a	1	3861	Light Cocoa				
b	1	642	Dark Beige Gray				
c	1	223	Light Shell Pink				
d	1	3859	Light Rosewood				
e	1	407	Dark Desert Sand				
f	1	3778	Light Terra Cotta				
g	1	3773	Medium Desert Sand				
h	1	316	Medium Antique				
i	1	3364	Pine Green				
j	1	3053	Green Gray				
k	1	3013	Light Khaki Green				
m	1	372	Light Mustard				
n	1	3782	Light Mocha Brown				
o	1	472	Ultra Light Avocado				
p	1	3046	Medium Yellow Beige				
q	1	3047	Light Yellow Beige				
r	1	677	Very Light Old Gold				
s	1	648	Light Beaver Gray				
t	1	3813	Light Blue Green				

---





u	u	j	u	j	V	V	X	X	b	V	b	X	V	V	U	U	U	U	V	X	V	b	j	n	n	b	T	a	b	n	j	V	V	X	b	j	u	j	j	b	b
k	k	j	j	j	b	W	b	X	b	V	b	V	U	U	R	R	R	V	V	T	X	b	n	n	b	Z	Z	a	n	n	X	W	X	i	i	k	m	b	b	b	
k	k	k	k	k	i	W	W	W	W	T	W	b	b	T	T	R	R	R	R	T	W	b	b	b	m	b	Z	Z	m	n	i	W	i	i	k	i	b	b	j		
k	k	k	k	k	m	W	W	R	T	W	T	V	R	R	R	R	R	R	T	W	b	b	m	m	Z	b	m	n	k	i	i	j	k	k	i	i	i	k			
k	k	k	u	k	b	W	W	R	T	R	R	R	R	R	R	R	R	T	W	W	W	W	W	b	m	b	b	k	k	k	k	k	i	i	i	j					
k	k	k	j	u	k	b	W	T	R	R	R	R	R	R	R	R	T	W	W	W	T	T	T	W	j	i	b	i	k	k	k	k	j	j	j	j	i	X			
i	b	W	W	k	k	j	W	T	O	O	Q	Q	R	R	R	R	T	W	W	W	T	T	T	W	j	i	b	i	k	k	k	k	j	j	j	j	i	X			
k	i	W	i	k	k	j	W	T	O	T	Q	R	Q	R	Q	R	T	W	X	X	W	T	T	W	T	W	j	j	b	b	i	k	k	k	k	j	u	j	j	i	X
k	k	k	k	k	m	i	W	W	R	Q	R	Q	Q	Q	R	T	W	W	T	R	T	T	W	j	j	W	W	W	i	k	k	j	i	j	k	u	j	j	i	X	
m	k	k	k	k	k	i	W	T	T	R	R	Q	Q	R	R	R	V	T	R	T	T	X	j	j	T	W	T	b	k	j	i	i	j	k	j	b	j	j	i		
i	k	k	m	m	j	i	b	W	W	T	T	U	Q	Q	R	R	R	T	V	T	T	R	R	T	W	T	W	W	b	k	b	i	j	j	b	X	W	X	j	j	
i	i	b	W	T	T	W	W	j	T	T	U	Q	Q	Q	R	T	T	R	T	T	T	O	R	T	T	W	b	b	R	R	W	W	T	R	W	X	W	X	b		
b	T	O	O	T	T	W	W	b	T	T	U	Q	Q	R	T	T	T	R	R	R	T	T	T	Q	R	R	R	R	R	R	R	Q	Q	R	Q	R	R	W			
X	T	T	T	T	O	T	W	W	T	T	T	R	R	R	R	T	T	T	T	W	W	T	T	R	Q	R	U	V	R	R	R	R	R	Q	Q	R	X				
V	T	U	Q	T	T	W	b	T	T	T	T	R	R	R	R	T	T	T	T	W	X	W	V	V	U	R	R	R	Q	R	R	Q	Q	Q	Q	R	X				
T	T	O	T	T	b	b	T	T	R	U	T	W	T	M	R	R	R	T	T	W	X	W	V	T	U	U	U	R	R	T	R	M	Q	R	R	U					
W	T	T	T	W	j	b	W	W	T	V	b	j	b	b	W	R	T	R	R	R	R	R	T	T	V	V	R	U	U	X	b	W	W	T	T	R	R	U			
j	X	W	O	W	j	k	i	W	T	X	j	k	j	k	j	W	R	Q	R	R	M	M	M	R	R	U	W	j	j	W	W	W	W	T	R	Q	R				
u	k	k	i	k	u	k	j	i	W	W	b	k	k	k	u	j	T	R	R	Q	R	M	M	O	T	Q	O	R	X	b	W	T	T	W	T	Q	R				
u	k	u	k	u	k	k	j	W	T	W	j	k	k	k	k	k	W	R	M	M	R	T	j	j	W	W	T	R	T	W	W	V	T	W	T	T	V				
w	k	k	k	k	u	u	k	T	W	W	j	k	k	k	k	b	T	R	R	R	T	b	j	j	j	X	W	W	b	b	T	T	W	X	W	R	U				
k	k	k	k	k	k	k	j	W	O	T	b	k	k	k	k	k	i	W	W	T	T	b	j	j	b	b	X	R	R	W	X	W	T	T	W	X	W	U			
m	k	k	k	k	k	k	k	k	m	k	k	k	k	p	w	k	i	W	W	T	W	j	k	b	b	b	R	R	R	R	T	T	W	R	X	X	U				
b	k	n	w	w	q	q	q	q	7	7	q	q	q	q	q	q	k	T	W	W	i	k	j	T	T	T	Q	Q	R	R	R	R	R	M	W	X	U				
j	m	n	q	q	7	r	r	r	q	q	q	q	q	r	r	q	q	k	i	i	j	W	O	R	R	Q	Q	Q	Q	Q	R	R	R	R	R	W	V				
k	k	k	q	r	q	q	q	r	r	r	r	r	r	r	r	q	q	o	k	i	b	T	O	R	R	Q	Q	Q	Q	Q	R	R	R	R	O	R	W				
k	m	p	q	q	q	r	r	r	r	r	r	r	r	r	r	q	q	o	k	i	W	R	R	R	Q	Q	Q	Q	Q	Q	Q	Q	Q	Q	Q	Q	Q				
k	w	q	q	q	r	r	r	r	r	r	r	r	r	r	r	q	q	q	o	k	W	T	R	R	U	R	Q	Q	R	W	V	Q	Q	Q	Q	Q	Q				
k	q	8	7	r	7	r	r	r	r	r	r	r	r	r	r	q	q	q	w	k	T	R	R	U	U	U	R	M	R	j	j	R	R	R	Q	Q	Q				
w	q	7	7	7	r	r	r	r	q	q	q	q	q	r	r	o	o	w	i	R	T	R	U	V	V	U	R	M	W	w	u	R	R	R	Q	R					
q	7	7	7	r	r	r	r	r	r	q	r	r	r	r	o	q	q	o	o	b	R	T	R	V	U	V	T	O	O	k	q	u	T	Q	Q	R	R	R			
7	7	r	r	r	r	r	r	r	r	r	r	r	r	r	q	q	o	o	k	T	R	R	T	V	R	T	R	W	i	o	w	o	W	R	U	V	X				
q	q	q	r	r	r	r	r	r	r	r	r	r	r	r	q	q	q	o	k	W	O	M	O	M	W	W	i	o	q	o	o	i	W	X	j	j	u				
q	r	r	q	r	r	r	r	r	o	q	r	r	r	r	q	q	o	o	j	b	W	T	W	W	k	k	o	o	o	o	i	j	u	j	j	u					
q	r	r	q	r	r	q	o	o	r	q	r	r	r	q	o	q	q	o	o	k	k	k	w	u	k	k	o	o	q	o	k	i	i	X	j	j	j				
q	r	r	r	r	q	q	q	p	o	o	o	r	o	o	o	q	o	o	k	k	k	k	k	k	k	k	o	o	q	w	m	b	W	R	W	X	j	j			
q	r	r	r	r	q	q	q	o	o	o	o	q	q	q	o	o	o	k	k	k	k	k	k	j	k	k	o	o	w	k	b	W	U	R	R	X	X				
q	r	r	r	r	q	q	q	o	o	q	r	r	r	q	q	q	o	k	k	k	k	k	k	j	k	k	o	o	k	W	T	U	R	R	Q	Q	R	V			
r	r	r	r	r	q	q	q	o	o	q	q	q	q	q	o	k	i	i	i	X	W	W	W	i	i	k	k	W	T	T	U	R	R	Q	Q	R	U				
q	q	o	q	r	q	o	q	q	o	q	q	q	q	p	m	W	T	W	W	W	T	R	T	i	i	i	k	j	W	T	T	U	U	Q	Q	P	Q				
q	q	q	q	q	q	q	q	o	o	w	q	o	k	b	T	O	O	T	O	R	R	R	R	R	R	T	W	i	u	k	k	i	W	X	X	V	U	R	Q	Q	
o	o	q	q	q	q	o	o	w	o	m	m	k	i	W	T	M	M	O	R	R	R	R	R	R	T	W	i	u	k	k	i	W	X	X	V	U	R	Q	Q		
W	m	o	o	o	w	o	o	w	w	k	W	T	b	W	W	O	M	O	R	Q	Q	Q	Q	R	O	R	W	W	k	k	i	i	j	X	R	Q	Q	Q	U	X	
b	W	b	b	b	m	k	k	k	i	W	T	T	W	W	W	T	R	Q	Q	Q	Q	R	R	O	W	W	i	i	W	X	i	R	Q	R	Q	Q	Q	V			
T	b	W	W	W	b	m	i	i	W	T	O	T	O	T	W	T	T	R	Q	Q	Q	Q	Q	R	W	W	W	j	W	W	W	R	R	R	Q	Q	Q	Q	Q		
T	b	W	b	W	i	k	i	W	T	O	O	T	R	R	R	R	R	R	R	T	W	T	T	T	W	b	j	W	X	W	R	R	R	Q	Q	Q	Q	Q	Q		
b	W	T	W	W	i	i	W	O	O	T	T	R	R	Q	R	R	R	T	W	b	j	b	W	b	i	i	b	W	W	R	R	R	Q	Q	Q	Q	Q	Q			
k	b	W	W	i	i	W	b	T	T	T	O	T	U	R	Q	Q	O	T	T	W	W	W	b	b	i	i	j	X	X	X	W	U	U	Q	Q	Q	Q	Q			
k	j	i	k	i	k	b	T	O	T	T	U	U	Q	N	N	Q	Q	O	T	T	W	i	i	i	k	k	i	X	b	X	V	U	Q	Q	Q	Q	Q				
k	k	k	k	k	b	j	W	T	R	R	N	Q	R	Q	R	R	T	V	b	j	b	W	i	i	i	k	k	j	X	W	W	U	U	Q	Q	Q	Q	Q			
k	k	k	k	k	i	W	W	O	O	T	Q	V	V	T	W	T	T	T	V	b	b	b	i	i	i	k	k	j	W	R	R	R	Q	K	K	Q	P	Q			
n	n	m	W	W	b	b	W	T	R	M	T	W	W	b	O	M	M	K	M	M	T	i	i	i	k	k	b	T	T	R	R	K	K	K	Q	P	Q				
b	W	W	i	k	k	k	b	T	R	W	R	W	b	b	W	T	O	N	N	M	M	W	i	k	k	k	j	W	W	T	R	Q	M	M	Q	Q	Q				
T	b	k	k	k	k	k	b	T	R	T	W	b	m	W	W	k	j	b	V	O	M	M	W	k	k	j	i	W	b	W	T	T	M	R	Q	Q	Q	Q			
b	k	k	k	k	k	k	W	O	T	b	k	k	b	W	j	j	j	b	T	R	T	W	b	b	j	b	W	T	T	X	j	j	j	W	M	M	Q				
i	m	k	k	u	k	k	k	i	W	W	b	j	j	W	O	W	W	V	X	T	Q	R	T	T	T	T	T	b	j	u	w	w	u	j	R	M	K				
b	j	k	k	k	k	k	k	k	k	W	T	T	W	T	T	O	O	O	Q	T	T	R	R	M	O	O	T	O	T	X	b	u	w	u	u	u	k	X	R		
W	i	j	k	k	m	k	k	k	k	k	b	W	T	O	O	M	M	Q	Q	R	R	Q	R	T	O	O	N	O	T	T	X	u									



w	y	y	2	2	2	2	2	6	2	2	2	2	2	2	1	1	1	2	2	2	w	w	n	n	n	n	j	j	X	X	X	R	j	b	j	R	T	V	T	T	U	Q	Q	U	V	V	X	V	X	j	j	O	M	N
2	2	2	2	2	2	2	2	6	2	2	2	2	2	2	2	2	2	1	1	1	1	1	n	n	n	n	j	j	j	j	j	R	j	j	i	T	R	W	V	T	V	R	Q	Q	U	V	V	V	b	j	j	b	O	O
2	2	1	1	2	4	2	2	2	2	2	2	2	2	2	2	1	1	1	1	1	1	n	n	n	n	n	j	j	j	j	W	X	j	b	W	O	T	T	T	U	U	R	Q	U	U	R	V	b	j	j	W	T		
2	2	1	n	n	1	2	2	2	2	2	2	2	2	2	1	1	n	n	1	1	1	1	n	n	n	n	n	j	j	j	W	X	j	W	R	T	T	T	U	Q	Q	R	U	U	R	T	b	b	W	b	T			
2	2	1	1	1	1	1	1	2	4	4	4	2	2	1	1	h	z	g	a	Z	a	a	a	a	b	b	T	j	j	j	X	W	j	X	W	R	M	O	T	T	Q	Q	Q	Q	Q	U	U	U	X	W	X	T		
5	2	2	1	1	1	1	2	4	4	1	9	z	3	1	1	g	z	h	h	g	e	a	e	e	b	b	T	j	j	j	X	W	X	W	R	R	T	N	I	Q	Q	Q	Q	Q	U	U	U	Q	Q	M	N	O		
5	2	2	1	1	1	1	3	z	z	g	e	e	h	h	a	a	a	h	h	h	h	e	e	n	n	T	O	j	j	j	X	W	X	W	R	R	T	N	I	Q	Q	Q	Q	Q	U	U	U	Q	Q	M	N	O		
2	2	2	2	2	1	z	1	z	g	e	e	e	g	h	a	a	Z	Z	a	c	Z	Z	a	a	T	O	T	j	b	W	T	X	T	M	Q	O	N	I	N	N	N	N	Q	Q	Q	R	R	R	M	M	N	N		
2	2	2	2	1	1	2	4	z	e	e	d	g	g	g	1	1	1	h	h	h	g	h	h	a	b	V	T	V	b	V	T	T	T	O	O	N	I	I	I	I	N	S	N	Q	R	R	R	M	M	N	N			
4	2	Y	Y	Y	w	1	2	n	e	e	e	g	g	g	4	4	1	1	n	1	1	1	1	1	1	1	n	n	T	T	T	T	N	N	O	N	K	N	K	K	I	K	Q	Q	R	W	T	N	Q	N				
w	w	2	2	Y	w	w	w	w	n	n	n	n	n	e	1	1	1	1	1	h	h	n	n	n	n	n	n	b	T	T	T	N	O	T	T	N	I	I	I	I	K	K	K	N	Q	R	T	T	T	Q	N			
w	2	5	5	Y	w	w	n	b	n	m	m	b	Z	a	h	n	1	1	1	a	Z	a	a	a	a	n	s	b	V	N	O	N	O	b	T	I	I	K	K	K	K	K	K	N	M	M	R	T	T	T	Q	N		
w	Y	2	2	2	Y	w	n	T	n	m	T	O	N	S	Z	S	h	1	n	a	a	a	a	a	T	T	T	T	N	N	N	N	N	V	S	L	K	K	K	D	D	K	K	Q	O	N	N	T	T	T	N	Q	N	
w	Y	2	2	2	1	n	a	T	n	m	T	N	O	T	S	a	n	1	a	Z	a	b	a	a	T	S	N	N	N	N	N	K	N	T	V	N	I	K	K	K	D	D	K	Q	K	N	N	N	T	V	T	N	N	
w	1	1	1	2	g	a	a	T	m	m	O	M	b	b	a	h	n	h	Z	a	b	b	b	T	N	N	N	K	I	K	N	V	V	I	I	K	K	K	K	K	Q	Q	Q	Q	Q	Q	Q	T	T	Q	K	N		
w	1	h	h	h	e	Z	Z	b	b	T	O	V	O	n	b	n	n	a	Y	a	b	b	O	I	L	N	S	N	K	K	Q	Q	b	Q	K	K	N	K	K	K	Q	Q	U	Q	Q	Q	Q	Q	R	N	Q	N		
w	n	h	c	e	e	Z	a	m	m	b	b	O	n	m	n	b	T	Z	a	b	V	L	G	L	N	V	U	N	N	O	T	T	V	N	K	N	K	K	K	Q	V	U	Q	N	Q	T	N	K	N	N				
n	a	a	e	e	e	Z	n	k	j	b	b	O	m	b	b	T	Z	a	b	b	T	L	I	G	Q	b	V	S	S	T	T	b	T	K	K	Q	Q	K	K	Q	Q	N	Q	N	O	N	O	N	N	N				
m	a	a	a	a	b	b	m	k	u	k	i	j	T	b	m	b	Z	a	e	b	K	L	G	K	U	U	Q	O	T	T	b	N	K	K	Q	Q	K	K	N	Q	T	N	N	O	O	O	N	O	N	N	Q	N		
b	b	b	b	b	T	b	k	k	j	j	k	T	b	m	b	b	a	Z	e	b	K	K	G	K	Q	T	Q	O	T	T	T	I	N	K	Q	Q	P	K	N	N	K	K	N	N	N	O	O	N	T	T				
n	n	m	m	n	n	W	b	k	j	j	i	j	W	b	m	b	Z	Z	m	b	Q	K	K	Q	Q	N	Q	O	T	T	N	L	L	N	Q	Q	Q	Q	N	K	K	K	I	N	N	N	K	Q	N					
w	w	k	k	k	j	b	j	u	k	j	b	b	W	T	b	T	T	b	Z	b	V	N	K	K	N	N	N	N	O	T	V	O	I	L	L	K	Q	Q	Q	Q	K	K	K	K	K	N	N	N	K	N	N			
u	k	k	k	i	b	j	b	u	k	j	m	i	W	T	W	b	b	b	b	b	V	T	N	N	T	S	N	T	V	V	N	I	N	N	Q	Q	Q	Q	K	P	K	K	K	K	K	K	Q	K	K	K				
u	k	k	k	j	j	j	b	k	k	m	b	m	b	W	b	b	b	b	m	m	b	T	O	T	T	O	T	b	T	O	N	N	N	T	T	Q	K	K	K	P	K	K	K	K	K	K	K	Q	K	K	K			
u	k	k	j	k	k	j	b	b	b	b	W	m	j	T	b	b	b	b	m	b	b	T	T	T	O	T	b	O	N	N	O	T	T	T	T	K	K	K	K	K	K	K	K	K	K	K	K	K	K	K	K			
w	k	j	m	k	n	m	b	T	b	j	j	W	W	b	b	b	m	b	b	T	T	V	T	O	V	b	T	O	O	O	O	T	T	T	T	K	K	K	K	K	K	K	K	K	K	K	K	K	K	K				
2	w	u	j	j	n	j	b	T	j	j	b	j	W	T	b	b	W	W	b	b	T	V	b	T	N	T	V	T	O	O	O	Q	Q	N	N	Q	K	K	K	K	K	K	K	K	K	K	K	K	K	K	L			
6	2	w	k	k	j	b	b	W	j	i	j	k	i	T	i	m	b	W	W	b	b	T	V	T	Q	Q	T	R	Q	Q	Q	Q	N	K	Q	Q	K	P	K	K	K	Q	Q	Q	Q	N	K	K	K					
6	2	2	w	n	b	W	b	W	b	b	j	j	k	k	T	j	m	b	b	b	O	T	T	Q	Q	Q	R	R	Q	Q	Q	Q	Q	Q	K	K	Q	K	Q	K	Q	Q	U	U	Q	Q	N	N	M					
8	6	2	w	k	b	b	j	W	i	j	j	j	k	T	j	m	k	m	b	b	W	O	T	T	Q	Q	Q	R	R	R	Q	Q	Q	Q	K	K	Q	Q	Q	K	K	Q	Q	Q	Q	Q	Q	Q	Q	O	T			
8	8	2	2	u	j	j	i	W	i	k	j	i	j	W	k	k	j	i	b	W	T	T	T	Q	Q	Q	Q	Q	Q	R	R	R	Q	Q	Q	K	K	Q	Q	Q	Q	Q	Q	K	K	N	Q	T	V	b				
7	8	8	2	w	k	j	i	b	W	j	j	W	i	T	T	X	X	W	W	W	T	O	T	V	V	U	Q	Q	R	R	R	R	R	R	R	R	R	R	M	K	L	K	Q	Q	N	K	N	Q	U	V	s	u	w	
q	7	2	2	w	k	i	i	j	W	X	b	W	W	R	R	R	W	W	T	R	R	T	V	b	T	Q	Q	Q	V	U	R	W	X	i	i	i	W	L	L	K	K	Q	Q	Q	Q	O	N	V	s	2	2	Y		
q	q	8	2	2	w	j	i	i	W	V	T	T	W	T	R	R	R	R	R	R	R	T	V	Q	Q	O	T	V	R	W	j	k	u	w	u	b	M	G	K	K	Q	Q	Q	Q	Q	Q	T	b	w	2	2			
q	q	q	q	q	w	i	i	W	b	b	T	T	V	T	Q	Q	U	U	Q	R	U	Q	K	K	O	T	W	j	k	w	w	k	W	M	G	L	K	K	Q	Q	Q	Q	N	Q	T	T	b	w	2					
q	q	q	q	q	w	j	j	j	j	b	b	T	V	V	R	Q	U	U	U	U	U	U	Q	M	O	O	W	m	k	o	k	i	W	O	K	K	K	K	Q	Q	Q	Q	R	R	T	T	b	n						
q	q	q	q	q	w	j	k	k	j	j	T	T	V	X	V	R	Q	R	U	U	U	U	O	T	O	i	k	k	k	W	W	W	Q	K	D	D	K	K	Q	Q	U	R	R	R	T	T	T							
q	q	q	q	q	w	u	j	k	j	i	j	W	W	W	b	b	W	R	M	Q	R	U	Q	Q	T	T	O	k	k	k	i	W	W	T	R	Q	Q	K	K	K	Q	U	T	Q	Q	R	T	T						
q	o	o	o	w	k	j	i	j	i	b	b	b	W	T	R	X	b	b	W	R	Q	R	U	U	T	O	O	j	k	k	k	i	W	T	T	Q	Q	Q	K	K	K	Q	T	Q	R	R	R	T						
o	q	o	k	k	i	i	i	b	b	X	W	W	O	R	b	j	j	b	W	R	M	K	Q	U	Q	T	O	T	j	k	i	W	T	R	Q	Q	Q	K	K	K	N	T	Q	T	Q	R	R	T						
q	q	o	m	m	i	j	j	j	b	b	j	T	b	b	b	V	T	T	Q	Q	T	b	T	W	j	k	j	W	R	R	Q	Q	Q	P	Q	Q	Q	Q	Q	Q	Q	Q	Q	Q	Q	Q	Q	Q	R	T	V			
q	q	w	m	i	j	i	j	j	b	W	b	j	j	W	T	M	W	V	b	T	T	T	T	T	T	X	W	W	j	u	b	R	Q	Q	Q	Q	Q	Q	Q	Q	Q	Q	Q	Q	Q	Q	Q	U	V	s				
q	q	q	k	i	j	j	j	i	W	X	X	W	X	X	T	L	W	b	b	T	T	T	V	b	T	T	W	W	j	X	R	Q	Q	Q	Q	Q	Q	Q	Q	Q	Q	Q	Q	Q	Q	Q	U	U	s	5				
q	q	q	k	j	j	j	j	j	X	W	W	W	X	b	M	N	V	V	T	T	T	V	b	T	T	b	j	W	R	Q	Q																							

Q	T	T	R	T	k	j	T	O	T	O	O	O	T	W	b	W	O	K	M	K	R	T	O	R	T	T	T	R	O	R	R	R	O	Q	Q	P	Q	Q	K	P	O		
Q	T	T	T	W	k	u	j	W	T	T	O	O	T	W	b	T	M	M	N	Q	R	T	T	W	V	V	T	T	T	R	R	R	Q	Q	K	K	Q	Q	P	P	P		
T	T	T	T	b	u	k	j	j	W	W	W	T	W	W	b	W	O	N	N	Q	Q	T	W	W	W	T	T	T	T	W	R	R	Q	Q	Q	K	K	K	P	P			
Q	V	V	W	j	k	i	b	i	j	j	b	W	W	b	b	W	O	N	Q	T	W	W	T	T	T	T	T	T	W	R	Q	R	R	Q	K	K	Q	P	P				
T	T	V	b	j	W	W	b	b	i	b	b	b	W	W	b	W	O	T	T	W	W	W	W	W	W	W	W	W	X	j	W	R	W	W	R	W	K	K	P				
T	T	T	b	V	T	T	T	T	W	b	b	b	W	W	b	W	O	T	T	W	W	W	W	W	W	W	W	W	T	b	W	R	W	X	i	X	R	Q	Q				
T	V	V	V	W	T	T	W	W	b	W	W	T	T	W	W	b	T	W	W	W	W	W	W	W	W	W	W	W	i	i	b	W	R	M	M	M	T	X	j	i	X	W	b
Q	T	T	O	T	T	T	W	T	T	T	O	T	T	T	T	W	b	W	W	W	W	W	W	W	b	i	j	j	W	R	Q	Q	Q	Q	W	j	i	b	j	j			
Q	T	T	O	O	T	T	O	T	T	O	O	O	T	T	W	b	W	T	T	W	W	W	W	W	W	W	W	W	W	W	W	W	W	W	W	W	W	W	W	W	W	W	
N	Q	Q	T	N	O	O	O	O	T	T	O	O	O	T	T	W	b	T	T	T	W	W	W	W	W	W	W	W	W	W	W	W	W	W	W	W	W	W	W	W	W	W	
Q	Q	Q	Q	T	T	V	V	V	T	N	O	O	O	T	T	W	b	T	T	T	T	T	W	b	i	b	T	T	Q	Q	K	P	K	K	M	W	u	u	u				
Q	T	T	T	T	T	T	V	V	T	O	O	O	O	T	T	W	b	T	T	R	R	T	W	W	W	W	W	W	W	W	W	W	W	W	W	W	W	W	W	W	W	W	W
Q	Q	T	T	T	N	T	T	T	T	M	M	O	T	T	O	W	k	b	T	R	R	T	W	W	W	W	W	W	W	T	T	Q	K	P	P	Q	K	Q	X	j			
Q	Q	N	N	Q	N	M	M	M	T	T	O	O	O	T	W	O	W	u	b	T	R	R	T	W	X	b	X	b	j	X	T	T	R	Q	Q	P	P	Q	U	b			
Q	Q	Q	Q	Q	N	N	M	N	R	T	T	O	O	T	W	T	W	j	b	W	T	T	T	W	b	W	b	j	b	T	R	R	Q	P	P	P	K	K	X				
Q	Q	Q	Q	N	Q	Q	Q	R	R	T	T	W	W	b	T	b	i	W	W	W	W	W	W	W	W	W	W	b	i	i	W	R	U	U	Q	Q	Q	P	P	R			
Q	Q	Q	Q	N	Q	Q	Q	Q	R	M	T	T	W	W	b	W	i	W	W	i	i	i	W	W	i	i	i	i	b	W	U	U	Q	Q	Q	Q	P	P	P				
Q	N	N	Q	N	Q	T	Q	O	T	O	T	W	W	T	b	W	b	i	W	W	i	i	j	i	W	i	i	i	i	W	T	R	U	U	Q	Q	Q	P	Q	P	Q		
Q	Q	Q	Q	N	O	O	O	T	T	T	b	b	b	W	j	W	b	i	i	i	i	k	i	W	i	i	j	j	W	R	U	Q	Q	Q	Q	P	Q	P	Q	P	Q		
T	T	T	T	T	T	T	T	b	b	b	b	m	b	T	m	b	i	i	i	k	k	j	k	k	i	k	i	i	j	j	b	W	T	R	Q	Q	Q	P	P	P			
Q	Q	T	T	T	W	b	b	b	b	b	W	b	W	T	i	i	m	i	m	k	i	m	m	m	k	i	k	k	k	i	W	W	W	R	Q	Q	Q						
N	N	N	N	O	T	b	b	W	b	b	b	W	b	W	m	m	i	m	k	k	k	k	k	k	k	k	k	k	k	k	j	i	j	W	R	R	R	Q					
K	K	K	N	M	N	T	W	W	b	b	b	i	W	W	m	m	i	k	k	k	k	k	k	k	k	k	k	k	k	j	k	k	k	k	i	W	W	W	W				
Q	Q	K	N	L	M	N	O	T	W	b	i	m	W	b	m	m	k	i	k	k	k	k	k	k	k	k	k	k	k	j	k	k	k	j	j	j	j	b					
P	K	K	K	L	K	M	O	T	W	m	m	W	m	m	m	m	i	k	k	k	k	k	k	k	k	k	k	k	k	j	k	k	k	k	i	j	j	j					
K	Q	K	K	K	K	N	N	M	O	b	m	b	k	m	m	i	b	k	k	k	k	k	k	k	k	k	k	k	k	j	k	k	k	k	j	i	i	j	j				
K	O	K	N	Q	O	L	K	N	N	O	b	b	i	k	k	i	i	k	k	k	k	k	k	k	k	k	k	k	k	j	k	k	k	k	k	k	k	k	j				
K	K	M	O	T	O	K	K	L	K	M	T	W	i	k	k	i	i	i	i	i	i	k	k	k	k	k	k	k	k	k	k	k	k	k	u	k	k	k	j				
M	M	M	T	T	W	T	N	L	M	M	T	W	i	k	k	i	i	i	W	W	W	W	W	W	W	W	W	W	W	W	W	W	W	W	W	W	W	W	W	W			
O	O	O	T	W	m	j	b	O	M	M	T	W	m	k	k	i	i	i	b	W	W	W	W	W	W	W	W	W	W	W	W	W	W	W	W	W	W	W	W	W			
V	T	b	b	b	n	n	n	m	b	T	W	b	m	k	k	m	k	k	b	j	j	b	b	i	W	b	j	k	k	k	k	k	k	k	k	k	k	k	i	k	u		
y	w	y	w	w	w	n	n	k	m	b	m	m	k	n	n	n	n	w	n	u	k	k	k	m	i	k	k	k	k	k	k	k	k	k	k	k	k	i	i	k			
y	y	2	2	2	2	w	n	m	n	w	w	n	z	z	n	z	2	w	w	k	k	k	k	i	i	i	i	j	j	k	j	k	i	i	i	j							
2	1	1	2	2	2	w	n	w	2	2	w	g	g	z	1	2	w	w	k	k	k	k	i	i	i	i	i	j	j	j	i	i	j										
2	2	1	1	1	Y	2	2	2	Y	2	4	3	z	g	3	4	1	n	1	2	w	n	k	m	m	m	m	i	i	k	k	j	k	k	i	j	j	b					
1	2	2	1	1	Y	2	2	2	2	2	4	3	z	g	3	4	4	1	1	1	1	w	n	k	k	k	k	k	k	k	k	k	k	j	j	k	j	k	j				
a	1	4	1	1	1	Y	2	2	2	2	4	1	g	z	4	4	4	1	z	z	1	w	n	k	k	m	k	k	m	k	k	k	k	k	k	k	k	i	i	j	u		
T	a	1	2	1	1	1	2	2	2	2	2	1	g	z	4	4	4	z	g	z	z	n	m	k	k	m	k	k	i	k	k	k	k	k	k	k	k	j	k	j	i	j	
T	a	n	1	1	1	1	2	2	2	2	3	z	g	z	4	4	3	z	g	z	g	m	k	k	k	m	k	k	i	k	i	i	j	k	k	k	k	k	j				
T	b	m	n	z	z	1	1	1	3	3	z	g	g	z	4	3	3	g	g	g	d	m	k	i	k	k	k	k	i	k	j	i	i	j	k	k	k	u					
b	n	n	1	z	z	z	z	z	z	z	g	g	g	z	3	3	z	g	g	g	e	m	k	k	k	k	k	i	i	j	i	i	j	k	k	k	j						
2	Y	2	2	1	1	g	z	z	z	3	z	g	g	g	z	z	3	g	g	g	d	n	u	u	k	k	k	k	j	k	i	i	j	j	k	k	k	k	j				
5	2	2	2	4	4	1	g	g	z	z	g	g	g	g	z	z	z	g	g	e	Z	e	n	u	u	u	w	u	u	k	k	i	i	i	i	j	k	k	j				
5	5	5	6	6	6	4	1	n	z	z	g	g	g	z	z	z	g	g	e	Z	e	w	2	Y	w	w	u	u	u	k	k	j	j	j	j	j	j	j					
5	5	5	6	6	6	4	1	2	4	1	z	z	3	4	3	3	z	z	n	n	Y	2	Y	w	w	u	u	u	k	k	j	j	j	j	j	i	i	i	j				
6	6	6	6	6	6	6	6	1	2	4	1	z	z	z	3	3	3	2	w	Y	2	w	n	n	u	k	k	j	j	j	j	j	i	i	i	i	i	i					
6	6	6	6	6	6	6	2	n	1	2	4	4	3	1	e	g	z	z	g	g	e	d	Z	b	b	k	k	k	k	j	j	j	j	i	i	i	i	j	j				
6	6	6	5	2	6	6	2	n	n	1	3	4	4	2	g	g	g	g	g	d	Z	Z	W	b	k	k	k	k	j	j	i	j	j	i	i	i	j	j					
6	6	6	6	6	6	2	2	n	a	g	z	3	4	4	z	e	e	g	d	d	d	Z	Z	T	b	j	i	i	j	k	j	i	i	i	i	i	i	b					
5	2	6	6	6	6	6	1	a	a	g	z	z	3	3	g	e	e	d	Z	d	Z	Z	Y	W	T	W	b	W	X	i	j	j	i	i	i	i	X	b					
5	6	6	6	6	2	2	2	n	V	T	Z	a	g	z	3	z	g	d	d	d	d	Z	Z	b	W	T	W	i	i	W	W	W	W	W	W	b	i	b	X				
6	6	6	2	2	y	w	u	j	T	T	V	b	a	e	3	g	Z	d	e	e	Z	b	m	W	R	R	W	X	W	X	b	i	W	W	W	W	X	X					
6	2	Y	w	n	b	b	V	T	R	U	V	Z	a	3	w	Z	Z	Z	T	T	k	b	R	R	R	X	X	X	W	W	i	i	i	i	W	W	X	X					
n	b	V	T	V	T	T	T	T	R	T	V	T	T	n	w	b	T	T	O	O	T	b	m	k	j	R	R	R	X	X	X	W	b	i	b	W	W	V					
T	T	O	T	T	O	R	R	R	T	T	V	T	b	b	b	W	T	O	O	O	T	b	j	i	W	R	R	R	X	X	X	W	b	i									

b	X	T	W	V	X	X	W	T	U	V	V	V	V	b	b	X	V	b	b	m	a	Z	Y	Z	Z	T	a	b	V	X	X	X	X	j	u	2	2	q	q	q	q	q	q	q	q	q	o	q	o	o				
b	W	T	W	X	V	V	W	W	U	V	V	V	X	b	b	X	U	U	X	V	u	n	N	N	T	T	T	T	V	V	X	b	X	X	b	w	2	q	q	q	q	r	q	q	q	q	q	p	o	o	o	o	p	
X	T	W	T	T	R	T	X	X	U	V	V	b	V	T	U	V	X	b	b	u	b	K	N	T	V	V	U	U	U	b	j	X	b	b	u	w	q	q	q	q	r	q	q	q	q	p	o	o	o	p	p			
X	X	W	T	V	V	X	X	W	U	V	U	V	X	V	R	T	X	X	j	j	u	b	V	T	T	Q	U	U	V	V	X	b	b	b	b	k	q	q	q	q	r	q	q	q	p	o	o	p	p	m				
V	W	R	R	V	V	U	T	T	b	j	b	X	V	V	V	X	b	b	j	b	u	u	T	b	U	U	V	U	U	b	X	V	b	j	w	q	q	q	q	o	o	o	o	p	p	o	o	p	p	W				
V	R	T	T	V	V	U	X	X	j	u	s	j	V	V	V	X	b	b	j	b	u	u	T	b	U	U	V	U	U	b	X	V	b	j	w	2	q	q	q	q	o	o	o	o	o	o	o	o	q	o	p	W		
X	R	R	R	V	V	b	j	u	j	j	j	j	X	b	X	W	V	j	b	u	u	T	R	V	U	V	V	V	j	j	j	j	u	w	q	q	q	q	o	o	o	o	o	o	o	o	o	o	p	w				
j	b	W	R	T	T	V	j	j	u	j	b	b	j	b	V	X	X	T	X	j	b	u	u	V	T	U	U	U	Q	U	j	u	k	j	k	k	2	q	q	q	q	q	q	q	q	o	o	q	q	o	p	w		
b	W	W	b	X	X	j	i	j	j	b	T	R	Q	Q	X	b	X	V	b	W	j	j	V	T	U	U	U	R	V	j	k	k	k	k	k	w	q	q	q	q	q	q	q	q	q	q	o	o	k	m				
b	W	W	X	b	b	j	i	i	b	X	X	Q	Q	U	U	X	b	b	b	b	b	j	j	X	W	Q	Q	R	R	T	j	k	k	j	k	k	u	w	q	q	w	w	q	q	w	q	q	w	o	k	i	W		
X	W	W	W	X	b	i	b	X	W	R	U	V	V	b	b	j	j	k	k	k	j	b	X	X	X	X	R	j	u	j	j	k	u	u	j	j	k	w	2	2	w	q	w	w	k	k	i	i						
X	T	R	R	V	X	X	W	W	V	V	V	V	V	b	b	V	V	V	X	X	j	u	u	u	u	u	u	W	W	j	j	k	u	u	j	T	W	w	2	2	w	u	k	k	k	j	k	j	k					
X	W	W	X	V	U	U	U	X	X	X	X	X	U	V	X	X	j	u	u	u	u	u	u	u	u	u	u	u	X	j	j	j	u	j	b	T	V	b	u	w	u	k	j	j	j	j	i	k	w	2				
b	b	b	X	U	Q	Q	Q	U	b	j	V	V	V	V	V	U	b	j	k	u	w	u	u	u	u	u	u	u	u	k	j	j	j	V	T	j	u	u	u	j	k	k	j	i	b	b	i	w	2	7				
V	V	T	R	U	Q	P	U	V	b	j	X	U	U	V	X	X	b	j	k	u	j	u	u	u	u	u	u	u	u	u	j	j	b	V	T	R	X	u	u	k	j	i	i	b	W	b	k	w	q	7				
U	R	T	R	U	Q	K	Q	U	U	V	X	U	U	V	X	b	b	j	j	j	u	j	u	u	u	j	j	k	u	u	u	k	j	j	b	T	T	W	b	j	j	b	b	b	W	j	k	w	2	7	7			
T	R	T	W	V	Q	K	Q	U	U	V	U	U	U	U	V	X	b	b	V	X	X	j	j	b	X	j	j	k	u	u	j	j	b	R	W	b	X	b	W	j	j	b	u	k	k	2	q	r						
V	W	T	R	V	Q	N	Q	U	U	V	U	U	U	U	U	V	U	V	R	X	X	b	X	X	j	k	u	k	j	j	b	T	W	u	u	j	b	b	T	b	b	j	2	8	q	q	r							
T	T	W	V	V	T	T	U	U	U	U	U	V	V	V	U	Q	X	j	u	b	X	j	j	j	j	k	u	k	j	j	b	T	W	u	u	j	b	b	T	b	b	j	2	8	q	q	r							
T	W	b	W	b	b	b	b	V	T	V	V	X	b	b	b	b	V	U	Q	Q	U	U	s	u	X	b	b	j	j	j	k	u	u	j	j	X	W	j	k	k	j	b	b	N	T	b	w	8	q	q	r			
W	T	W	b	b	b	b	X	T	b	b	j	u	j	j	j	j	V	U	Q	Q	V	s	X	U	b	b	j	j	k	u	u	j	W	T	X	j	k	k	j	j	j	b	T	O	n	8	2	7	q	q	r			
W	M	T	b	b	b	b	W	b	b	j	j	k	k	j	j	j	j	j	V	Q	V	b	b	U	b	b	j	j	j	u	u	j	W	W	V	b	j	k	k	j	j	j	b	M	b	2	2	8	7	7	q	q		
T	T	O	T	W	b	b	W	b	b	W	b	j	u	j	j	j	b	s	j	V	b	b	V	R	V	b	j	j	u	u	j	W	R	X	V	X	i	j	k	k	j	j	W	b	2	8	2	7	7	q	r	q		
V	T	T	T	T	V	b	b	W	X	j	j	j	j	j	b	V	V	V	V	b	V	Q	U	V	b	s	s	s	b	U	V	U	V	X	X	b	j	k	u	j	j	W	w	8	2	7	7	r	r	q	q			
b	T	T	T	O	T	V	b	b	b	j	j	j	j	b	V	U	U	V	U	U	V	U	V	U	b	s	V	U	U	U	V	W	b	j	j	k	j	j	W	j	2	2	7	7	r	r	q	q						
V	V	T	T	T	T	V	V	V	b	X	V	V	V	U	U	V	V	V	V	V	V	U	U	V	V	V	U	Q	U	U	V	U	X	b	X	X	X	b	j	j	j	W	R	u	2	q	7	7	r	q	q			
O	T	T	b	T	T	T	V	b	V	T	R	R	U	U	U	V	V	X	b	b	X	X	U	U	U	U	U	U	U	X	j	X	X	X	b	b	b	X	Q	R	R	b	w	2	q	q	q	q						
O	O	O	T	T	a	T	T	T	b	b	U	U	U	V	b	b	b	b	b	b	b	V	X	U	V	Q	Q	Q	U	V	V	X	X	X	X	V	V	T	R	Q	W	b	b	w	w	w	q	q	q					
O	O	O	O	T	T	T	T	V	V	V	U	U	V	X	b	b	V	U	U	U	V	U	U	U	U	Q	U	U	U	b	X	X	X	V	X	U	L	Q	U	R	Q	R	V	b	W	k	w	q	q	q				
T	O	O	N	O	T	a	T	O	T	Q	U	U	V	V	U	Q	U	U	U	V	X	V	U	R	R	Q	U	U	U	b	X	V	V	U	G	K	G	N	U	Q	Q	Q	T	T	n	q	q	q	q					
T	T	T	T	S	T	T	T	Q	U	X	X	U	U	Q	Q	U	V	V	V	U	U	R	U	Q	Q	U	U	X	V	V	V	Q	D	G	B	K	U	U	Q	U	U	Q	U	T	w	7	q	q	q	q				
V	V	T	V	T	S	T	T	T	V	V	V	U	V	V	U	U	V	V	V	U	U	V	U	U	U	U	Q	Q	U	U	b	V	U	K	Q	U	U	V	U	K	Q	U	K	I	K	U	Q	O	b	2	2	q	q	q
V	V	T	T	T	T	O	O	T	V	V	V	U	V	V	V	V	V	V	V	V	V	V	U	U	V	U	U	U	U	U	U	U	U	U	U	U	U	U	Q	Q	T	N	N	T	K	G	G	O	n	w	2	w	p	
T	T	T	T	T	T	O	O	O	T	T	U	U	V	V	V	V	U	V	V	V	U	U	U	U	U	U	Q	Q	Q	Q	U	U	V	U	Q	Q	Q	U	U	T	V	G	C	C	G	G	N	V	b	W				
T	O	T	O	O	S	S	O	O	O	T	T	U	U	U	U	U	U	U	U	V	V	U	U	U	Q	Q	P	Q	Q	Q	V	V	V	X	U	U	U	V	Q	Q	G	B	C	C	B	C	B	C	L	F				
T	T	O	N	S	S	O	T	T	S	S	U	U	U	U	U	U	U	U	U	V	U	U	U	Q	Q	Q	Q	Q	U	V	X	X	V	U	U	Q	Q	K	K	U	K	B	B	C	C	B	B	B	B					
T	W	T	O	T	T	O	T	T	T	T	U	U	U	U	U	V	U	U	U	U	U	U	U	U	Q	Q	Q	U	V	V	V	V	X	U	Q	D	B	A	G	Q	Q	I	G	C	C	B	B	G						
T	T	T	W	T	T	T	b	b	T	T	T	U	U	U	U	V	U	U	U	U	U	U	U	Q	P	Q	Q	U	V	V	V	V	X	X	Q	K	B	B	B	B	F	B	C	K	N	K	I	G	B	B	B			
Q	T	W	b	b	V	V	b	b	T	T	S	U	U	U	U	V	U	U	U	U	U	U	Q	Q	Q	Q	Q	V	V	V	V	V	K	F	A	A	A	C	B	B	F	I	K	G	C	L	B	A						
Q	O	W	b	b	b	b	V	T	T	Q	Q	U	U	U	U	U	U	U	U	U	V	U	U	Q	Q	Q	Q	U	V	V	V	V	V	P	A	A	B	B	B	B	A	B	C	L	C	B	G	F	B					
T	R	T	T	T	V	V	b	V	V	V	Q	Q	U	U	U	Q	U	V	V	V	V	U	Q	Q	Q	Q	U	V	V	V	V	X	U	Q	K	A	A	A	B	C	B	B	B	G	G	C	G	G	B					
T	T	T	T	T	T	W	W	V	V	V	U	Q	U	U	U	U	b	b	V	U	Q	U	U	U	V	X	X	V	V	U	K	K	Q	Q	C	A	A	B	B	A	C	C	G	G	C	G	K	C						
V	T	T	T	T	V	T	W	b	T	V	T	Q	Q	U	U	T	S	u	b	V	V	Q	K	Q	U	Q	U	V	X	V	V	U	D	B	C	Q	Q	D	G	B	A	A	B	C	C	C	G	K	G					
T	T	M	O	T	V	T	T	W	T	V	T	U	U	U	S	N	S	U	V	Q	G	G	G	P	U	V	V	U	V	Q	K	G	B	G	Q	U	K	D	K	K	I	I	G	C	B	G	K	K						



T	b	b	b	b	T	W	j	b	b	T	b	d	Z	d	d	d	f	f	f	f	e	e	Z	S	E	B	B	B	B	C	K	Q	Q	Q	R	R	W	W	W	W	X		
W	b	X	O	W	b	W	W	T	M	N	N	N	N	Y	Z	Z	Z	d	f	f	d	d	Z	N	H	F	B	B	B	B	A	G	Q	Q	Q	R	R	R	R	R	T	V	
b	T	O	N	M	O	O	O	M	N	I	N	N	J	Y	Y	Y	Z	Z	Z	Z	Z	Y	I	B	B	B	B	C	G	K	Q	Q	Q	Q	R	R	R	R	R	R	U		
O	T	L	G	Q	T	T	O	V	O	N	N	N	I	J	H	H	J	J	Y	Y	Y	O	K	C	B	B	B	C	K	Q	Q	Q	R	Q	Q	Q	R	Q	R	Q	R		
N	G	G	L	O	O	O	O	N	N	N	N	I	L	E	E	E	E	H	H	N	N	N	I	L	I	L	L	K	K	Q	Q	Q	Q	Q	Q	R	R	R	R	Q	R	Q	
K	G	G	L	O	O	O	O	O	T	T	O	N	G	E	E	E	E	I	N	S	N	M	N	N	N	Q	K	Q	Q	Q	Q	Q	Q	R	R	R	R	Q	R	Q	R	Q	
G	G	F	N	O	O	O	O	T	O	T	T	T	T	O	N	L	L	N	O	T	T	O	K	F	N	Q	Q	Q	Q	Q	Q	Q	Q	R	R	R	R	R	R	U	U		
L	K	K	O	O	M	M	M	O	T	T	T	V	T	T	T	O	O	O	T	T	T	O	T	O	L	L	K	Q	Q	Q	Q	Q	Q	Q	Q	R	R	R	R	V	V		
Q	Q	T	O	O	T	T	T	W	b	T	T	T	T	O	T	T	O	O	O	T	O	O	O	T	O	L	L	K	Q	Q	Q	Q	Q	Q	Q	Q	R	R	R	V	V		
O	Q	T	T	T	O	O	O	W	b	b	b	b	b	W	T	T	W	W	T	T	T	T	T	T	T	T	T	T	T	T	T	T	T	T	T	T	T	T	T	T	T	T	
T	T	T	V	T	T	O	O	O	T	T	T	W	T	W	W	W	T	T	T	T	T	T	T	T	T	T	T	T	T	T	T	T	T	T	T	T	T	T	T	T	T	T	
O	O	T	V	V	N	N	O	O	T	T	T	T	T	T	T	T	O	O	O	O	O	O	O	T	O	N	L	G	L	K	Q	Q	U	U	Q	Q	U	U	R	R	R	R	R
M	O	W	X	X	N	N	N	O	T	T	T	T	T	O	T	T	T	O	O	O	T	Q	L	E	F	L	N	Q	T	U	U	Q	Q	U	U	R	Q	R	U	U	U		
M	R	W	k	v	N	K	K	K	N	N	O	T	O	O	O	N	N	N	L	L	G	L	L	L	N	T	T	T	R	R	Q	Q	Q	Q	Q	Q	R	U	U	U	U		
O	O	V	j	v	K	K	K	G	L	L	K	Q	Q	N	N	N	L	K	L	F	B	B	G	K	N	O	N	O	O	T	T	T	T	T	M	Q	R	Q	R	U			
O	T	T	V	Q	L	G	G	K	G	G	G	K	L	C	B	A	B	G	K	N	N	O	N	O	O	O	T	T	T	T	T	V	T	O	R	R	Q	R	U	U			
Q	T	T	V	Q	B	G	C	G	C	G	F	B	B	C	B	B	F	B	B	G	Q	T	O	O	O	T	O	Q	Q	Q	T	T	U	T	Q	T	T	U	V	V			
R	T	T	U	K	A	A	C	G	G	C	G	B	B	C	C	C	C	G	C	K	O	N	N	O	N	N	K	N	N	Q	Q	K	N	Q	V	T	Q	U	V	V			
N	Q	Q	Q	K	A	B	B	A	G	G	C	G	C	B	B	B	B	B	B	B	B	B	B	K	O	O	O	T	K	G	L	L	K	K	L	K	D	L	Q	Q	U	U	
N	Q	Q	Q	D	A	B	B	A	K	K	C	G	C	B	A	B	A	A	B	N	O	T	N	K	G	G	L	K	G	G	C	G	G	C	F	K	Q	Q	Q	Q	Q		
N	T	Q	Q	C	A	B	A	A	K	Q	K	C	C	D	D	B	B	B	B	N	O	T	K	L	G	G	L	L	G	G	C	G	C	B	F	K	Q	Q	Q	Q			
K	K	K	K	B	A	A	A	B	L	T	T	K	G	B	A	B	B	A	B	G	N	N	O	L	F	G	L	K	L	G	K	G	C	B	B	B	B	G	K	Q	Q		
G	K	K	K	G	B	B	B	G	N	T	T	K	L	F	C	F	A	B	K	K	K	Q	K	K	N	Q	Q	K	G	G	G	G	C	B	B	B	B	D	P	P	P		
G	G	K	K	L	B	C	C	G	N	N	N	O	Q	Q	N	G	F	B	G	K	K	Q	Q	Q	N	N	Q	N	K	G	G	C	G	F	A	B	B	D	Q	Q			
B	C	G	K	K	G	B	B	G	L	K	N	K	N	K	K	G	C	K	K	K	K	Q	K	G	K	N	S	K	N	N	K	L	K	K	G	C	D	Q	Q	Q			
B	G	G	G	K	G	B	F	B	A	G	K	K	N	K	G	G	K	K	K	G	G	K	K	G	C	C	G	K	N	K	T	T	T	O	T	Q	K	O	L	G	Q		
A	C	B	G	G	C	B	B	B	B	B	F	C	L	L	K	G	G	C	A	B	G	G	F	C	L	K	N	T	T	T	T	N	Q	Q	Q	Q	K	Q	Q	Q			
B	B	B	G	F	B	B	C	C	C	B	F	F	G	L	G	G	C	F	G	G	L	L	L	K	G	G	G	K	N	Q	T	T	T	O	T	Q	T	Q	Q	Q			
B	C	C	G	B	F	G	G	L	L	G	C	G	G	C	C	G	G	K	Q	K	L	G	G	F	G	G	K	Q	T	T	N	T	Q	T	Q	K	Q	U	U				
A	B	B	G	G	G	K	L	N	N	N	K	K	K	K	K	G	K	G	G	G	G	G	G	G	G	G	L	L	L	K	Q	Q	Q	Q	Q	Q	Q	Q	Q	U	U		
B	A	B	C	G	L	L	K	Q	T	T	N	K	N	K	N	K	G	G	G	F	F	F	F	G	K	K	G	K	K	Q	N	K	N	N	Q	Q	U	U	U	U			
C	F	B	C	C	G	L	K	N	T	N	K	Q	K	N	K	G	L	G	G	F	C	F	G	K	L	G	C	L	K	K	Q	N	N	K	K	Q	Q	Q	Q	Q			
C	C	C	G	G	L	L	K	N	N	K	L	G	G	L	L	K	K	N	K	G	L	G	G	K	G	G	K	Q	K	K	K	K	K	K	K	Q	Q	Q	Q	Q	Q		
G	C	C	G	C	F	L	K	K	Q	N	K	F	C	B	G	K	K	N	Q	K	K	L	K	L	G	C	G	G	K	K	G	D	G	K	Q	Q	Q	Q	Q	Q	Q		
G	B	C	C	G	G	K	K	K	Q	Q	Q	F	G	L	I	K	K	K	K	N	L	K	K	G	G	G	G	G	B	A	B	F	D	D	D	D	D	P	P	P			
B	B	F	G	L	K	K	K	K	Q	Q	K	B	G	G	L	K	N	N	N	N	I	K	K	L	G	G	G	C	C	B	A	B	C	D	D	D	D	D	D	D			
B	A	C	G	K	K	K	K	Q	Q	Q	F	G	B	G	L	L	K	Q	Q	N	K	L	K	L	G	C	G	K	G	D	G	B	B	D	D	D	D	D	D	D			
A	B	G	K	K	K	K	Q	Q	Q	Q	G	B	G	C	G	L	K	K	L	G	G	B	A	B	G	G	G	G	D	D	D	D	D	D	D	D	D	D	D	D			
A	B	G	L	L	K	K	Q	Q	U	U	Q	B	F	A	G	F	C	G	L	K	K	L	G	F	C	A	A	A	B	F	C	G	G	C	F	D	D	D	D	D			
A	F	K	K	K	K	K	Q	Q	Q	Q	G	C	B	F	B	B	G	K	K	K	G	G	B	C	B	A	A	B	B	G	D	D	D	D	D	D	D	D	D	D			
A	B	G	K	L	N	K	Q	Q	Q	Q	L	G	B	F	B	B	F	L	K	K	G	G	B	A	A	A	B	C	G	G	K	D	D	B	A	D	D	D	D	D			
A	A	B	K	K	Q	Q	Q	Q	Q	Q	K	K	G	G	C	B	B	C	G	K	G	G	D	C	A	A	A	F	G	K	L	K	D	D	B	A	D	K	K	K			
B	A	A	F	L	K	Q	Q	Q	Q	Q	K	K	G	G	C	B	A	B	B	G	B	G	G	G	C	B	B	G	L	K	G	F	D	D	D	D	D	P	P	P			
B	B	A	A	F	K	Q	Q	R	Q	Q	G	G	K	K	G	C	B	A	B	B	B	B	C	D	G	F	B	C	G	G	G	A	C	C	D	C	B	D	D	D			
C	G	C	F	F	L	Q	Q	Q	Q	K	F	F	K	Q	L	F	A	A	B	C	B	B	B	C	G	B	B	C	B	B	B	B	C	B	F	B	B	D	D	D			
L	L	L	L	L	K	Q	Q	Q	K	A	F	K	Q	Q	Q	Q	K	L	N	L	B	B	C	F	A	B	C	B	B	B	B	B	G	C	C	G	G	B	D	D			
K	G	K	K	K	N	Q	K	G	K	Q	Q	Q	U	Q	Q	Q	Q	Q	Q	Q	Q	Q	K	C	B	B	B	A	C	B	A	A	A	C	C	G	K	G	G	D			
G	G	K	K	Q	U	Q	K	K	Q	Q	Q	Q	Q	Q	Q	Q	Q	Q	Q	Q	Q	P	D	G	B	B	B	F	B	B	B	B	B	B	B	B	B	B	B	B			
G	G	L	L	K	Q	Q	Q	K	K	Q	Q	Q	Q	Q	Q	Q	Q	Q	Q	Q	Q	Q	K	D	B	B	C	B	A	B	B	F	C	C	G	G	F	B	F	K	K		
G	G	K	K	Q	Q	U	Q	K	K	K	Q	Q	Q	Q	Q	Q	Q	Q	Q	Q	Q	Q	Q	K	G	B	B	B	F	G	F	F	C	G	G	C	B	B	D	D	D		
G	D	K	K	Q	Q	Q	Q	K	K	K	K	Q	K	Q	Q	Q	Q	Q	Q	Q	Q	Q	Q	Q	Q	K	C	F	F	C	F	F	B	F	B	F	A	A	B	D	C		
G	G	K	Q	Q	Q	Q	Q	K	K	K	K	K	K	K	K	Q	Q	Q	Q	Q	Q	Q	Q	Q	K	G	C	B	B	B	F	F	C	F	C	B	B	C	G	D	D		
D	K	K	Q	Q	Q	U	K	G	K	K	K	K	K	K	K	K	Q	Q	Q	Q	Q	Q	Q	K	G	F	B	B	B	F	C	G	F	C	A	B	B	B	C	C			
K	Q	Q	Q	Q	Q	K	C	D	K	Q	Q	Q	Q	Q	Q	Q	Q	Q	Q	Q	Q	Q	Q	P	Q	K	C	B	B	B	B	I	L	I	G	A	A	B	C	G			
K	K	Q	Q	Q	Q	K	C	F	D	G	G	K	Q	N	K	Q	K	Q	Q	Q	Q	Q	Q	Q	Q	Q	Q	D	F	B	B	B	G	G	K	K	B	B	F	G	K		
K	K	K	Q	Q	G	B	B	F	G	F	F	G																															

To order online: [www.mysticstitch.com](http://www.mysticstitch.com)

Be Sure To Check Our Website For Our Full Line Of Cross Stitch Patterns  
750 Designs & More From!

Fill out this order form and mail with your payment to:

**Mystic Stitch**  
P.O. Box 455  
Blakeslee, PA 18610 USA  
Phone: 570-242-5703  
Fax: 570-646-9685

Item	Item Number	Pattern Name	Qty.	Price each	Total
1					
2					
3					
4					
5					
6					
7					
8					
9					
10					
				Subtotal	
				Discount:	
Shipping/handling (Refer To Mail Order Form On Website For Exact Cost)					
				<b>Grand Total</b>	

**Ship patterns to:**

First name \_\_\_\_\_

Last name \_\_\_\_\_

Address \_\_\_\_\_

City \_\_\_\_\_

State \_\_\_\_\_

Postal Code \_\_\_\_\_

Country \_\_\_\_\_

**For credit card orders:**

Cardholder name, as listed on card:

\_\_\_\_\_

Card number:

\_\_\_\_\_ - \_\_\_\_\_ - \_\_\_\_\_ - \_\_\_\_\_

Expiration date (mm/yy) \_\_\_\_\_

Email address (required)

\_\_\_\_\_